



DISTRICT OF COLUMBIA
PUBLIC SCHOOLS

WE ARE WASHINGTON
GOVERNMENT OF THE
DISTRICT OF COLUMBIA
DC MURIEL BOWSER, MAYOR



DC PUBLIC SCHOOLS

Seaton ES Modernization: Playground Visioning SIT Meeting

April 27, 2026 at 4:00 pm

Agenda

1. Meeting Objectives
2. Meeting Norms
3. Project Overview
4. Engagement Strategy
5. Playground Overview
6. Open Discussion
7. Next Steps



Meeting Objectives

1. Project Overview and Engagement Process
2. Learn about DCPS Playground Standard
3. Feedback, Q&A, Next Steps

Meeting Norms

- Be present and respectful of time.
- Be open to new ideas.
- Understand that we are all working towards the same end goal.



Project Overview

Project Overview

Project Location

1503 10th St NW

Ward

Ward 2

Project Type

Full Modernization, including demolition and new construction

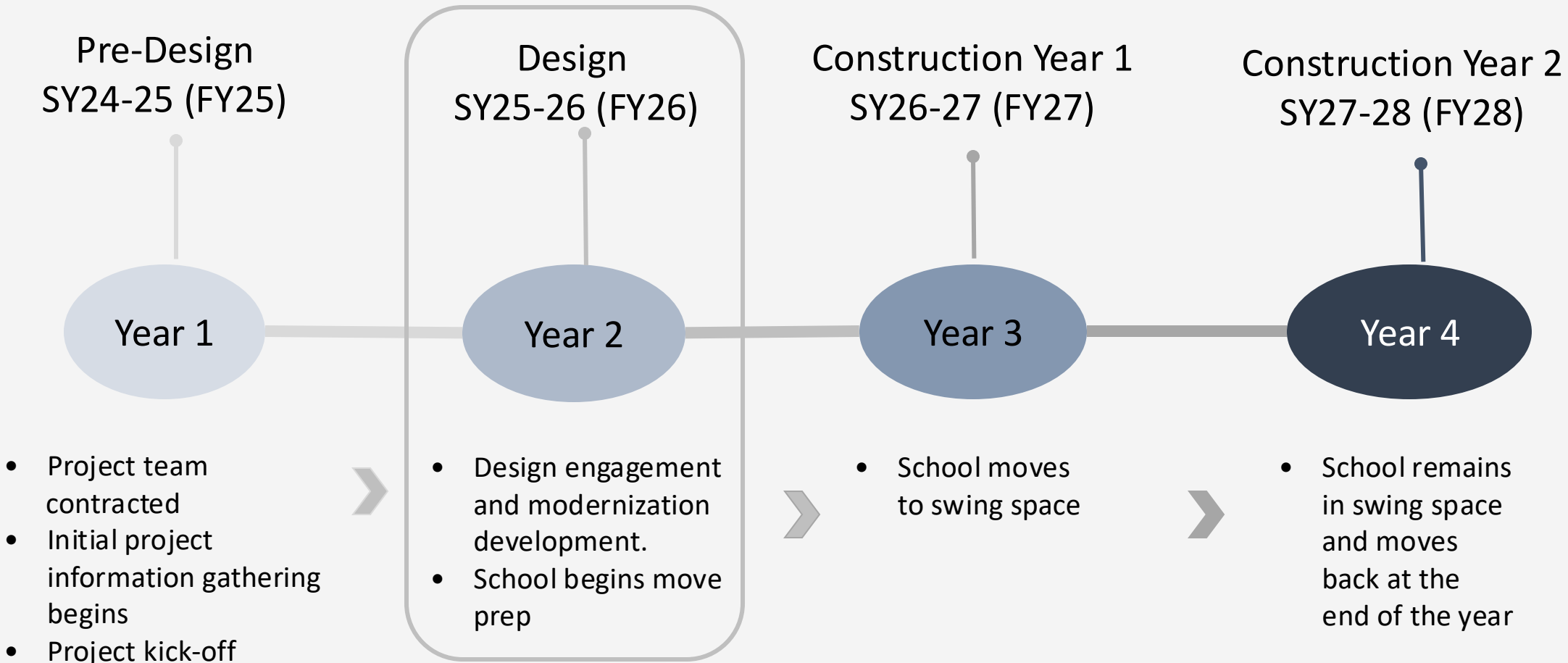
Project Team

DCPS POC: Michelle.Sterling@k12.dc.gov; Project Coordinator

DGS: Colby Pfister, Project Manager; Eyo Ephraim, (APM)

Design-Build Team: [GCS-Sigal](#)/[CGS](#)

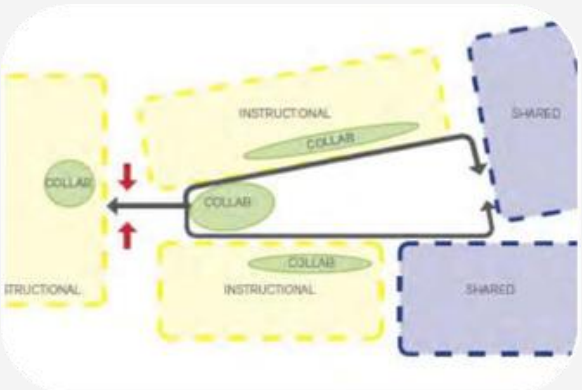
Project Timeline



Anticipated Project Completion: Summer 2028 for SY2028-29

Design Process

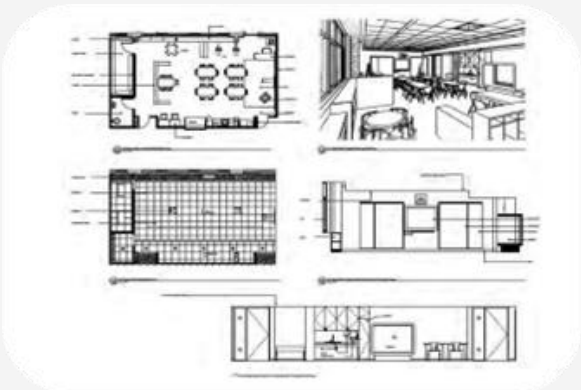
Each modernization follows a developmental sequence that is divided in four phases. Each phase builds off the last, with the engagement and input provided mainly in Concepts and Schematics.



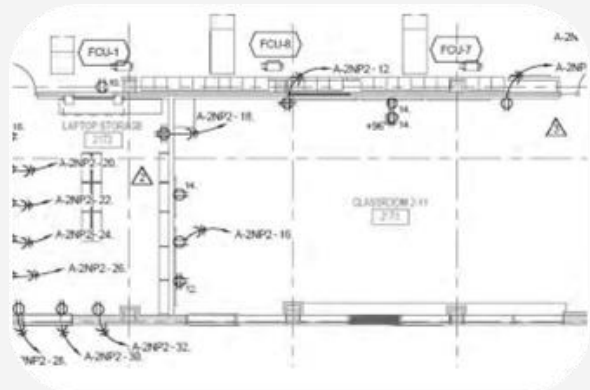
Concept Design



Schematic Design



Design Development

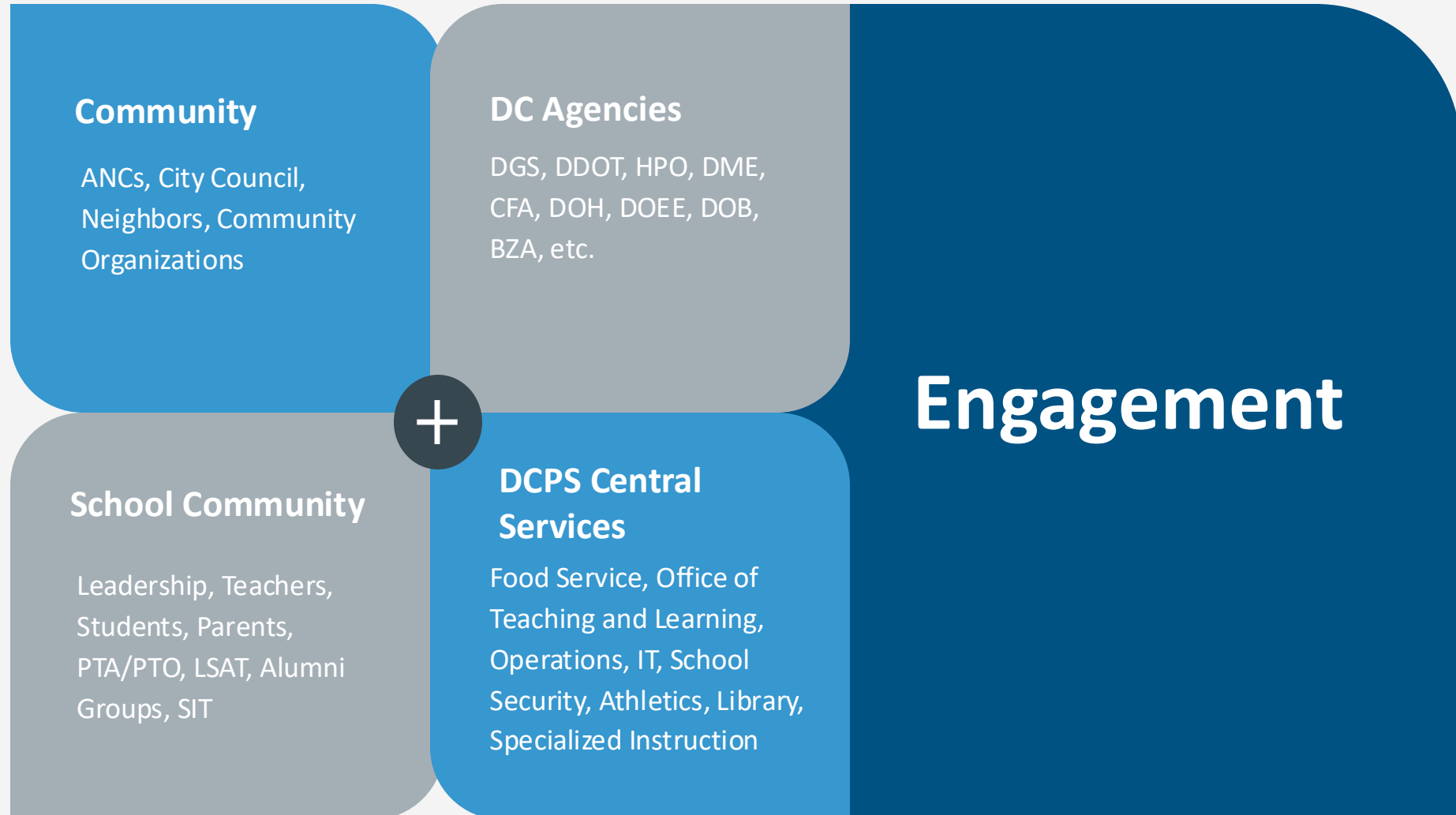


Construction Documents



Engagement Strategy

Key Stakeholders



Engagement Strategies

DCPS engages communities in three main ways:

1. School Improvement Team (SIT) Meetings
2. Community Meetings
3. Project Updates via Facilities Website

Facilities Website: <https://bit.ly/DCPS-Facilities>

Seaton ES Modernization Page: <https://bit.ly/SeatonMod>

Anticipated Meeting Structure

Project Phase	Name of Meeting	Community Meeting or SIT	Date(s)
Design Phase	Project Introduction with Design-Build Team	Community Meeting	March 18, 2025
	Project Introduction with Design Build Team	SIT Meeting	June 5, 2025
	Concept Design Presentation Meeting (part 1)	SIT Meeting	September 16, 2025
	Concept Design Feedback Working Meeting (part 2)	SIT Meeting	September 23, 2025
	Schematic Design Presentation Meeting (part 1)	SIT Meeting	February 17, 2026
	Schematic Design Feedback Working Meeting (part 2)	SIT Meeting	February 24, 2026
	Design Development Presentation Meeting	SIT Meeting	
Construction Phase	Construction Overview	Community Meeting	
	Back to School Design Update	SIT Meeting	
	Interiors Concept Overview	SIT Meeting	
	Construction Update (as needed)	Community Meeting	
	Playground Part 1 - Visioning	SIT Meeting	April 27, 2026
	Playground Part 2 – Working Meeting	SIT Meeting	
	FF&E/Construction Update/Tour	SIT Meeting	

Anticipated Meeting Structure

Project Phase	Name of Meeting	Community Meeting or SIT	Date(s)
Design Phase	Project Introduction with Design-Build Team	Community Meeting	March 18, 2025
	Project Introduction with Design Build Team	SIT Meeting	June 5, 2025
	Concept Design Presentation Meeting (part 1)	SIT Meeting	September 16, 2025
	Concept Design Feedback Working Meeting (part 2)	SIT Meeting	September 23, 2025
	Schematic Design Presentation Meeting (part 1)	SIT Meeting	February 17, 2026
	Schematic Design Feedback Working Meeting (part 2)	SIT Meeting	February 24, 2026
	Design Development Presentation Meeting	SIT Meeting	
Construction Phase	Construction Overview	Community Meeting	
	Back to School Design Update	SIT Meeting	
	Interiors Concept Overview	SIT Meeting	
	Construction Update (as needed)	Community Meeting	
	Playground Part 1 - Visioning	SIT Meeting	April 27, 2026
	Playground Part 2 – Working Meeting	SIT Meeting	
	FF&E/Construction Update/Tour	SIT Meeting	

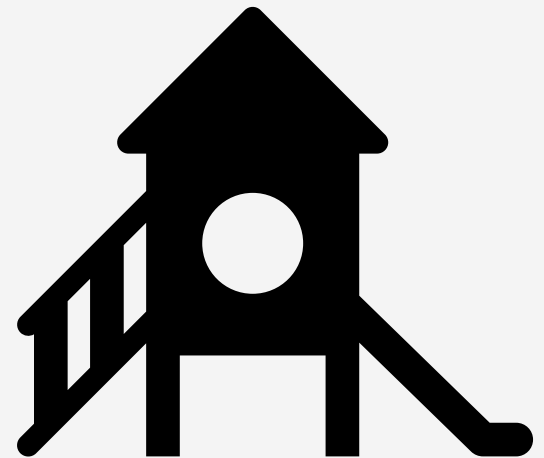


Playground Overview

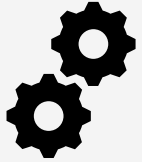
Playground: Introduction

A DCPS Playground includes:

- Structures for climbing, swinging, spinning, sliding, etc.
- Soft surface to prevent head injuries from falls
- Shade, freestanding and integrated into structures
- Inclusive and ADA play options for all students



Playground: Types of Play Development



Motor Skills

- Promotes coordination, strength, and endurance through running, climbing, stepping, sliding and balancing



Cognitive Play

- Promotes curiosity, cause-and-effect thinking, and problem-solving



Imagination Play












- Promotes imagination, language development, and self-confidence

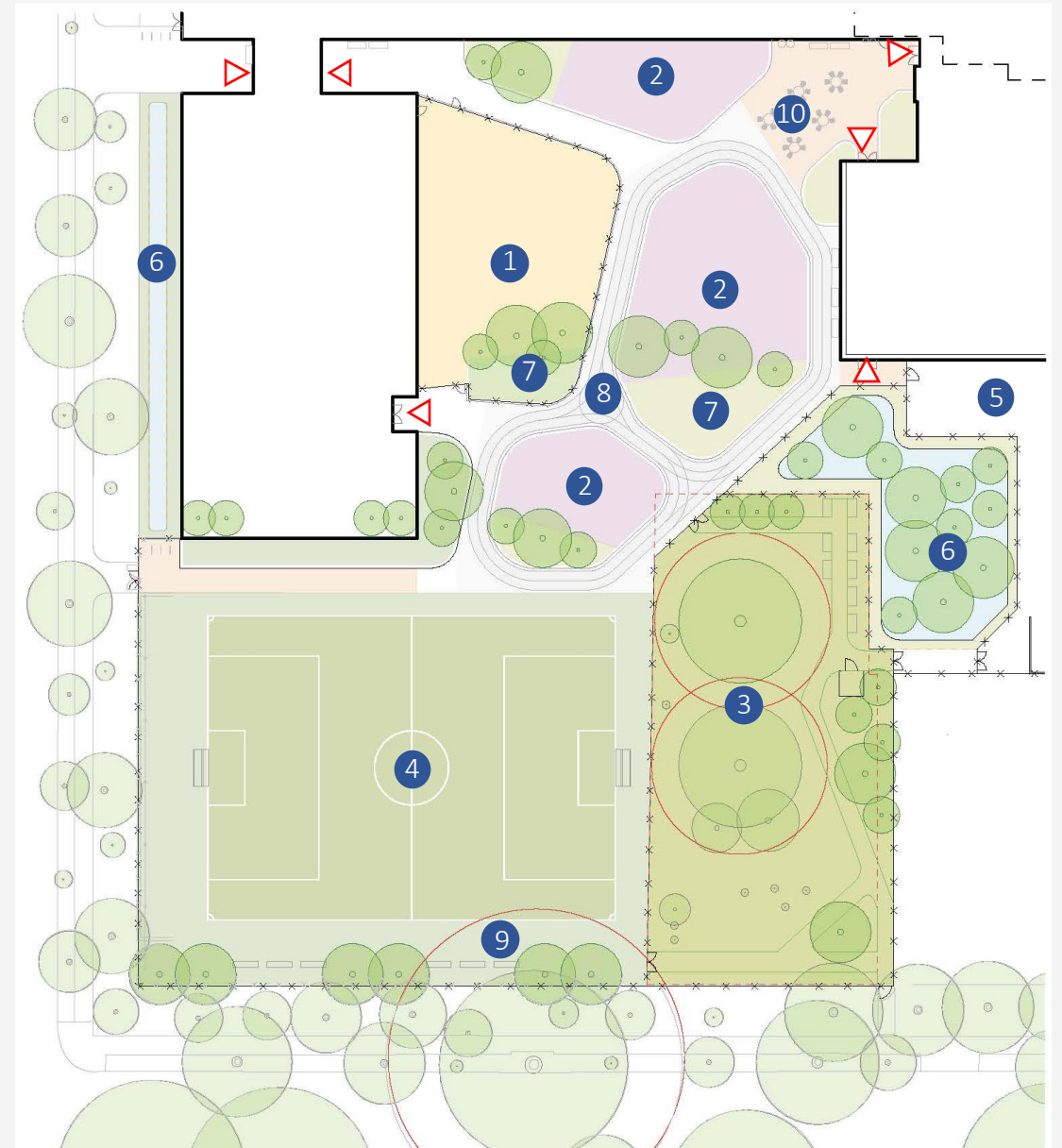


Social Play













- Promotes communication, cooperation, empathy and self-management

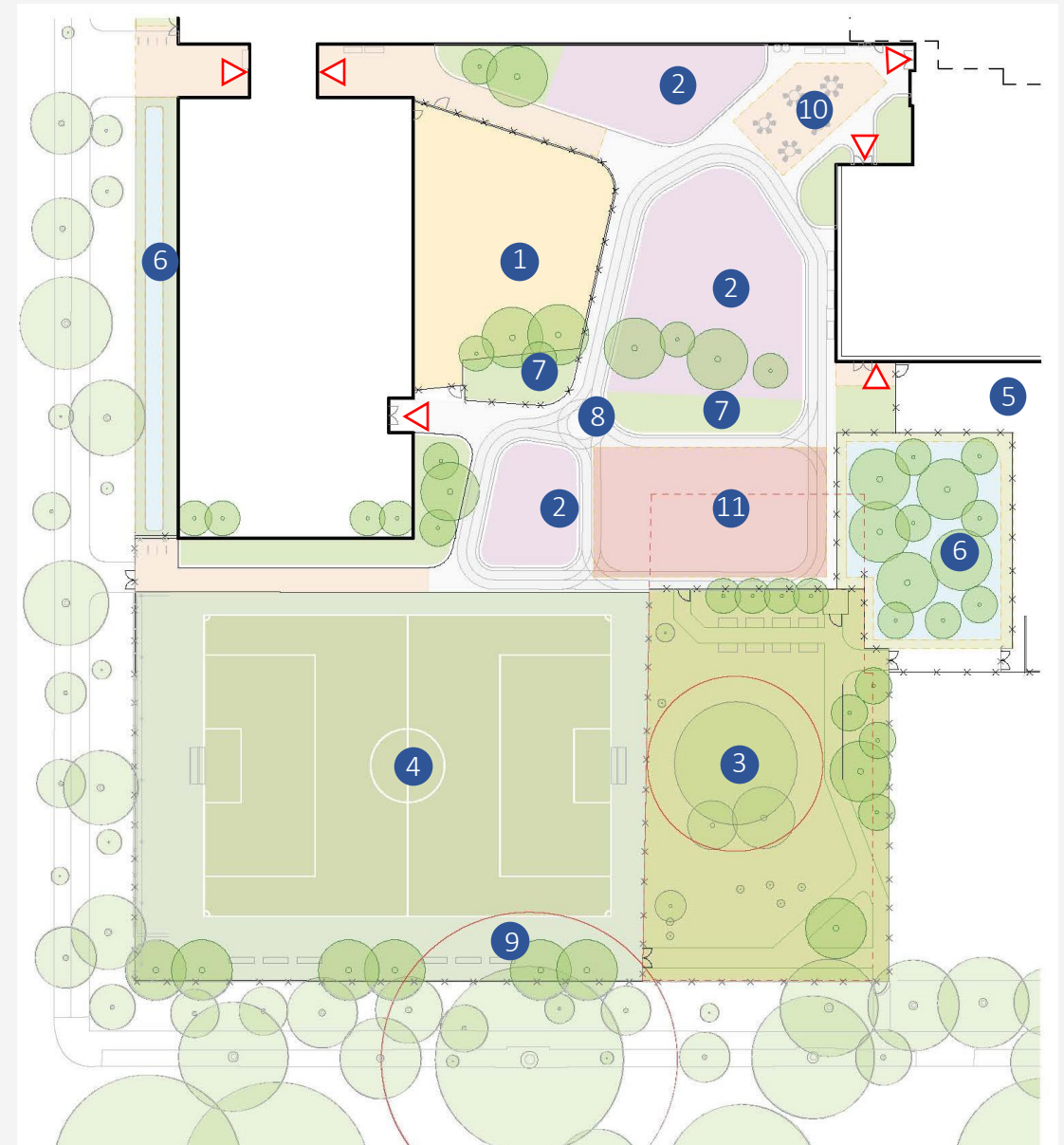
Playground: Site Plan A

-  Exit
-  1 Pre-K Playground
-  2 K-5 Playground
-  3 Garden
-  4 Main Field
-  5 Parking & Loading
-  6 Bioretention Plantings
-  7 Shade Plantings
-  8 Traffic Garden (paths within play area)
-  9 Area of Protected Trees
-  10 Outdoor Dining/ Gathering



Playground: Site Plan B

-  Exit
-  1 Pre-K Playground
-  2 K-5 Playground
-  3 Garden
-  4 Main Field
-  5 Parking & Loading
-  6 Bioretention Plantings
-  7 Shade Plantings
-  8 Traffic Garden (paths within play area)
-  9 Area of Protected Trees
-  10 Outdoor Dining/ Gathering
-  11 Multipurpose Court





Open Discussion

Playground Elements: Discussion

1. This discussion will focus on playground elements, which permit students to interact with, and within, the play space. DCPS installs multi-user equipment to allow more than one student to utilize equipment.
2. To what extent, do we want one connected piece of equipment versus more separate items?
3. What color scheme or 'look' do we want the playground to have?
 - School colors
 - Neon colors
 - Primary colors
 - Earth tones

Playground Elements: Climbing



*NOTE: All images are illustrative of equipment style, and may not represent actual equipment options

Playground Elements: Hanging



*NOTE: All images are illustrative of equipment style, and may not represent actual equipment options

Playground Elements: Spinning



*NOTE: All images are illustrative of equipment style, and may not represent actual equipment options

Playground Elements: Rocking



*NOTE: All images are illustrative of equipment style, and may not represent actual equipment options

Playground Elements: Swinging



*NOTE: All images are illustrative of equipment style, and may not represent actual equipment options

Playground Elements: Sliding



*NOTE: All images are illustrative of equipment style, and may not represent actual equipment options

Playground Elements: ADA Compliance & Passive Play



*NOTE: All images are illustrative of equipment style, and may not represent actual equipment options

Playground Precedents: Communication Board



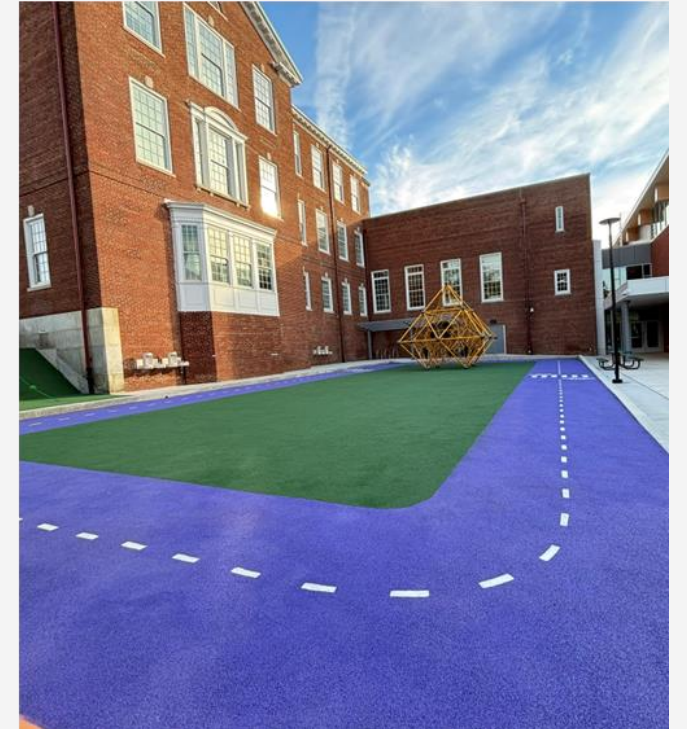
*NOTE: All images are illustrative of equipment style, and may not represent actual equipment options

Playground Elements: Shade



*NOTE: All images are illustrative of equipment style, and may not represent actual equipment options

Playground Precedents: Traffic Garden



*NOTE: All images are illustrative of equipment style, and may not represent actual equipment options

Playground Precedents: Mounding



*NOTE: All images are illustrative of equipment style, and may not represent actual equipment options

Playground Precedents: Surfacing

Poured-in-Place Rubber Surfacing (PIP)



Playturf



*NOTE: All images are illustrative of equipment style, and may not represent actual equipment options

Playground Precedents: Nature Inspired

Pre-K/K play area



5-12 year play area



*NOTE: All images are illustrative of equipment style, and may not represent actual equipment options

Playground Precedents: Traditional

Pre-K/K play area



5-12 year play area



*NOTE: All images are illustrative of equipment style, and may not represent actual equipment options

Playground Precedents: Futuristic / Abstract

Pre-K/K play area



5-12 year play area



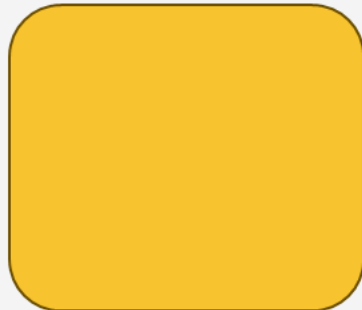
*NOTE: All images are illustrative of equipment style, and may not represent actual equipment options

Playground Precedents: Color Palette

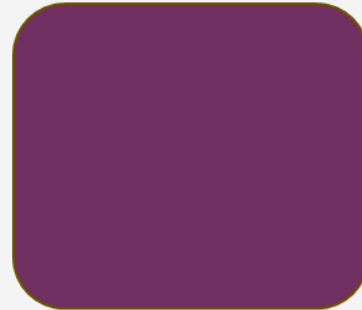
Earth Tones



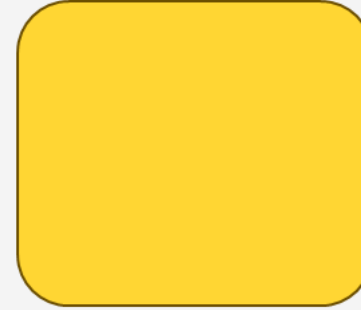
Primary Colors



Secondary Colors



School Colors



Open Discussion

Questions?



Next Steps

- The next SIT meeting is anticipated for June 2026.
- Take our Playground Visioning Survey:
 - Survey for Adults (English): <https://forms.gle/VFNkgA4wohphnb8g8>
 - Survey for Adults (Spanish): <https://forms.gle/Z99tsMv9xeWMMLK39>
 - Survey for Kids (English): <https://forms.gle/95uoiSNzy9rDHHao9>
 - Survey for Kids (Spanish): <https://forms.gle/TSjks52QqLxaRjpo7>
 - The landscape architect will then work closely with playground vendors to synthesize the gathered input and create playground designs.

Connect with us:

DCPS POC: Michelle.Sterling@k12.dc.gov; Project Coordinator

Seaton ES Project Page: <https://bit.ly/SeatonMod>